

## LABORATORY MICROSCOPES

### XY SERIES



**XY-B2**

The eXcellent optics systems and dependable manipulation systems to be incorporated into XY series clinical biological microscope, which making clear image and handy operate.

#### Features:

1. Wide-field Eyepiece, high light illumination and superior optical parts make the image clear, sharp and bright.
2. Backward nosepiece with superior objectives makes the best viewing effect and more space for the operator.
3. Wide mechanical stage with 2-Microslide specimen clamp provides more convenience for the observer.
4. High precision focusing adjustment system and humanized configuration design provide operator more comfortable.
5. Frontal undrawing type Light collector framework, makes the user change the bulb more quickly and easily.

Specification		XY-B1	XY-B2
Optical	Color corrected infinity optical system	*	*
Viewing head	Compensation Free Binocular Head. Inclined at 30°	*	
	Compensation Free Trinocular Head. Inclined at 30°		*
Eyepiece	PL10X/22mm high eye-point plan eyepiece	*	*
	PL5X plan eyepiece for optional		
Objective	Infinity plan achromatic objective: 4X, 10X, 20X, 40X (S),100X (S)Oil	*	*
	Plan phase contrast objective 10X, 20X, 40X (S),100X (S)Oil		
Nosepiece	Reversed quintuple nosepiece	*	*
	Reversed quadruple nosepiece for optional		
Stage	175X145mm mechanical stage, adjusting for right hand, Moving range: 75X50mm	*	*
	175X145mm mechanical stage, adjusting for left hand, Moving range: 75X 50mm		
Stand	Built in low position Coaxial coarse & fine focusing system	*	*
Condenser	N.A1.2/0.22 swing achromatic condenser	*	*
Power	90V-240V wide voltage, 6V/30W built-in halogen bulb condenser of illumination,	*	*
	A continuous adjustment of brightness	*	*

**L3000 SERIES**



L3000A

L3000 series biological microscope is equipped with plan achromatic objectives and wide field eyepieces. It provides clear image, wide field, convenience operation. It can be used for biology medicine agriculture and industry area widely. It is the ideal instrument in medical treatment, teaching demonstration and scientific research.

**Features:**

1. With wide field eyepieces and plan achromatic objectives, the field of view is widely and clear
2. Coaxial coarse/fine focus system, with tensional adjustable and up stop, minimum division of fine focusing: 2μm
3. Using Kohler illumination with 6V 20W halogen lamp with brightness control

**Standard Configuration:**

Model	L3000A	L3000B
Eyepiece	WF10X/20mm	
Objective	Plan achromatic PL 4X/0.10	Plan achromatic PL 4X/0.10
	Plan achromatic PL 10X/0.25	Plan achromatic PL 10X/0.25
		Plan achromatic PL 20X/0.40
	Plan achromatic PL 40X/0.65 (Spring)	Plan achromatic PL 40X/0.65 (Spring)
	Plan achromatic PL 100X/1.25 (Spring, oil)	Plan achromatic PL 100X/1.25 (Spring, oil)
Eyepiece tube	Binocular (Inclination of 30°)	
Focus system	Coaxial coarse/fine focus, with tension adjustable and up stop minimum division of fine focusing: 2μm.	
Nosepiece	Quadruple(Backward ball bearing inner locating)	Quintuple(Backward ball bearing inner locating)
Stage	Double layer mechanical (Size:210mmX140mm, Move range: 75mmX50mm)	
Abbe condenser	N.A.1.25 Rack & pinion adjustable	
Filter	Blue filter, Frosted filter	
Collector	For halogen lamp	
Light source	6V 20W Halogen lamp with brightness control	

**Optional accessories**

Name	Technique Parameter		
Eyepiece	WF16X/11mm		
	Dividing 10X/20mm, 0.1mm/Div		
Eyepiece tube	Trinocular	Inclination of 30°	
Filter	Green filter, Yellow filter		
Condenser	Dark field	Dry	
		Immersion	
Phase contrast unit	Eyepiece	Centering telescope	
	Objectives	Phase contrast plan achromatic 10X/0.25 PHP	
		Phase contrast plan achromatic 20X/0.40 PHP(Spring)	
		Phase contrast plan achromatic 40X/0.65 PHP(Spring)	
		Phase contrast plan achromatic 100X/1.25 PHP(Spring, oil)	
	Turnplate phase contrast condenser(PH-I)		
	Turnplate phase contrast condenser(PH-II)		
	Flashboard phase contrast condenser		
Pull board phase contrast condenser			
Infinity optical system	Eyepiece tube	Binocular (Inclination of 30°)	
		Trinocular (Inclination of 30°)	
	Eyepiece	Centering telescope	
	Objectives	Infinity plan achromatic 4X/0.10	
		Infinity plan achromatic 10X/0.25	
		Infinity plan achromatic 20X/0.40	
		Infinity plan achromatic 40X/0.65(Spring)	
		Infinity plan achromatic 100X/1.25(Spring, oil)	
		Infinity phase contrast plan achromatic 10X/0.25 PHP	
		Infinity phase contrast plan achromatic 20X/0.40 PHP	
		Infinity phase contrast plan achromatic 40X/0.65 PHP(Spring)	
		Infinity phase contrast plan achromatic 100X/1.25 PHP(Spring, oil)	
		CCD adapter	
	Camera	DV-1(With USB & video output)	
DV-2(With USB output)			
DV-3(With video output)			
Digital camera adapter	Digital camera adapter(A610,A620,A630,A640)		
Photograph unit	2.5X/4X Change over photograph attachment with 10X viewing eyepiece		
	4X Focusing photograph attachment		
	MD Adapter		
	PK Adapter		
Facility polarize	Polarizer (360° rotatable stage)		
	Analyzer		

**L3200**



L3200series biological microscopes are equipped with infinity plan achromatic objectives and wide field eyepieces. They have beautiful sculpt and provide clear image, wide field, convenience operation. They can be used for biology medicine agriculture and industry area widely. They are the ideal instrument in medical treatment, teaching demonstration and scientific research.

**Features:**

1. Equipped with wide field eyepieces and infinity plan achromatic objectives, the field of view is widely and clear
2. Coaxial coarse/fine focus system, with tensional adjustable and up stop, minimum division of fine focusing: 2μm
3. MaXimal movement of stage is 30mm
4. Using Kohler illumination with Integrated field diaphragm and 6V30W halogen lamp, adding radiator and brightness control.
5. Trinocular can be observation for eyepieces and microphotography in 100% light flux, suits for low illuminance microphotography.

**Standard Configuration**

Model	L3200
Eyepiece	WF10X/22mm
Infinity plan achromatic objective	PL 4X/0.10(Work distance):19.8 mm
	PL 10X/0.25(Work distance):5.0 mm
	PL 40X/0.65(Spring) (Work distance):0.66 mm
	PL 100X/1.25(Spring, oil)(Work distance):0.36mm
Eyepiece tube	Trinocular(Inclination of 30°)
Focus system	Coaxial coarse/fine focus, with tension adjustable and up stop minimum division of fine focusing: 2μm.
Nosepiece	Quadruple(Backward ball bearing inner locating)
Stage	Double layer mechanical (Size:210mmX140mm,Move range: 75mmX50mm)
Abbe condenser	N.A.1.25 Abbe condenser, Rack & pinion adjustable
Filter	Blue filter, Frosted filter
Collector	Collector for halogen lamp illumination and integrated field diaphragm
Light source	6V 30W Halogen lamp with brightness control

**XSZ-146 SERIES**



**XSZ-146**



**XSZ-146AT**



**XSZ-146T**



**XSZ-146A**

High efficiency, flexibility and stability are the characters of this series microscope. It is specially developed for various applied scopes. It is widely used, from daily work to scientific research, in Laboratory, Hospitals and Colleges. Because of higher capability with lower price and humanized configuration design, It also becomes the first choice of individual, Schools, and Scientific research organization.

**Features:**

1. Wide-field Eyepiece, high light illumination and superior optical parts make the image clear, sharp and bright.
2. Backward nosepiece with superior objectives makes the best viewing effect and more space for the operator.
3. Wide mechanical stage with 2-Microslide specimen clamp provides more convenience for the observer.
4. High precision focusing adjustment system and humanized configuration design provide operator more comfortable.
5. Frontal undrawing type Light collector framework, makes the user change the bulb more quickly and easily.

Specification		Model			
		146	146T	146A	146AT
Viewing head	Compensation Free Binocular Head. Inclined at 30°	*		*	
	Compensation Free Trinocular Head. Inclined at 30°		*		*
Eyepiece	WF10 X/ 18mm	*	*		
	WF10 X/ 22mm			*	*
Objective	Achromatic objective: 4X, 10X, 40X(S), 100X(S)Oil	*	*		
	Infinity objective: 4X, 10X, 40X(S), 100X(S)Oil			*	*
Stage	Double layers mechanical stage, Stage size: 180mm X 150mm, Moving range: 75mm X 50mm	*	*	*	*
Condenser	N.A1.25 Abbe condenser with iris diaphragm&filter	*	*	*	*
Focusing	Coaxial coarse & fine focusing adjustment with rack and pinion mechanism Fine focusing scale Value 0.002mm	*	*	*	*
Collector	High brightness Kohler illumination	*	*	*	*
Light source	Halogen tungsten bulb 12V/20W.AC 85V-230V, Adjustable brightness	*	*	*	*

**XSZ-148 SERIES**



**XSZ-148**



**XSZ-148T**

High efficiency, flexibility and stability are the characters of this series microscope. It is specially developed for various applied scopes. It is widely used, from daily work to scientific research, in Laboratory, Hospitals and Colleges. Because of higher capability with lower price and humanized configuration design, It also becomes the first choice of individual, Schools, and Scientific research organization.

**Features:**

1. Wide-field Eyepiece, high light illumination and superior optical parts make the image clear, sharp and bright.
2. Backward nosepiece with superior objectives makes the best viewing effect and more space for the operator.
3. Wide mechanical stage with 2-Microslide specimen clamp provides more convenience for the observer.
4. High precision focusing adjustment system and humanized configuration design provide operator more comfortable.
5. Frontal undrawing type Light collector framework, makes the user change the bulb more quickly and easily.

Specification		Model	
		148	148T
Viewing head	Compensation Free Binocular Head. Inclined at 30° (55mm -75mm)	*	
	Compensation Free Trinocular Head. Inclined at 30° (55mm -75mm)		*
Eyepiece	WF10X	*	*
Objective	Achromatic objective: 4X, 10X, 40X(S), 100X(S)Oil	*	*
Stage	Double layers mechanical stage	*	*
	Stage size: 180mm X 150mm		
	Moving range: 75mm X 50mm		
Condenser	N.A1.25 Abbe condenser with iris diaphragm&filter	*	*
Focusing	Coaxial coarse & fine focusing adjustment with rack and pinion mechanism, Fine focusing scale Value 0.002mm	*	*
Collector	High brightness Kohler illumination	*	*
Light source	Halogen tungsten bulb 12V/20W.AC 85V-230V	*	*
	Adjustable brightness		
Optional Accessory	Eyepieces: WF16X,WF20X, P16X		
	Plan-Objectives: 4X,10X,20X(S),40(S), 100(S)Oil		
	Semi-plan objectives: 4X,10X,20X(S),40(S), 100(S)Oil		
	Infinite Objectives: 4X,10X,20X,40X(S), 100(S)Oil		
	Phase contrast Attachment		

**XSZ-150 SERIES**



**XSZ-150AT**



**XSZ-150T**



**XSZ-150A**



**XSZ-150**

High efficiency, flexibility and stability are the characters of this series microscope. It is specially developed for various applied scopes. It is widely used, from daily work to scientific research, in Laboratory, Hospitals and Colleges. Because of higher capability with lower price and humanized configuration design, It also becomes the first choice of individual, Schools, and Scientific research organization.

**Features:**

1. Wide-field Eyepiece, high light illumination and superior optical parts make the image clear, sharp and bright.
2. Backward nosepiece with superior objectives makes the best viewing effect and more space for the operator.
3. Wide mechanical stage with 2-Microslide specimen clamp provides more convenience for the observer.
4. High precision focusing adjustment system and humanized configuration design provide operator more comfortable.
5. Frontal undrawing type Light collector framework, makes the user change the bulb more quickly and easily.

Specification		Model			
		150	150T	150A	150AT
Viewing head	Sliding Binocular Head.Inclined at 45° ( 52mm -74mm)	*			
	Compensation Free Binocular Head .Inclined at 30° ( 55mm -75mm )			*	
	Sliding Free Trinocular Head .Inclined at 45° ( 52mm -74mm )		*		
	Compensation Free Trinocular Head .Inclined at30° ( 55mm -75mm )				*
Eyepiece	WF10X	*	*	*	*
Objective	Achromatic objective: 4X, 10X, 40X(S), 100X(S)Oil	*	*	*	*
Stage	Double layers mechanical stage, Stage size: 180mm X 150mm, Moving range: 75mm X 50mm	*	*	*	*
Condenser	N.A1.25 Abbe condenser with iris diaphragm&filter	*	*	*	*
Focusing	Coaxial coarse & fine focusing adjustment with rack and pinion mechanism, Fine focusing scale Value 0.002mm	*	*	*	*
Collector	High brightness Kohler illumination	*	*	*	*
Light source	Halogen tungsten bulb 12V/20W.AC 85V-230V, Adjustable brightness	*	*	*	*

**XSZ-152 SERIES**



**XSZ-152A**



**XSZ-152B**



**XSZ-152T**

The series microscope is widely used in Biology, Histology, Pathology, Medicament, chemistry research and Clinical examination. It can also be used for education in Colleges and Schools.

Specification		Model		
		152A	152B	152T
Viewing head	Monocular Head.Inclined at 45°	*		
	Compensation Free Binocular Head .Inclined at 30°		*	
	Compensation Free Trinocular Head Inclined at 30°			*
Interpupillary Distance	55mm -75mm	*	*	*
Eyepiece	WF10X	*	*	*
Objective	Achromatic objective: 4X, 10X, 40X(S), 100X(S)Oil	*	*	*
Stage	Double layers mechanical stage, Stage size: 125mm X 130mm, Moving range: 75mm X 50mm	*	*	*
Condenser	N.A1.25 Abbe condenser with iris diaphragm&filter	*	*	*
Focusing	Coaxial coarse & fine focusing adjustment with rack and pinion mechanism, Fine focusing scale Value 0.002mm	*	*	*
Collector	High brightness Kohler illumination	*	*	*
Light source	Halogen bulb 6V/20W.AC 85V-230V, Adjustable brightness	*	*	*



**XSZ-156 SERIES**



**XSZ-156**



**XSZ-156T**

This series microscope is specially developed for various applied scopes .It is widely used, from daily work to scientific research, in Biology, Histology, Pathology, Medicament chemistry research and Clinical examination. Because of higher capability with lower price and humanized configuration design. It becomes the first choices of individual, Colleges & schools, Hospitals and Scientific research organization.

**Features:**

1. Wide-field Eyepiece.high light illumination and superior optical parts make the image clear ,sharp and bright.
2. Backward nosepiece with superior objectives makes the best viewing effect and more space for the operator.
3. Wide mechanical stage with 2-Microslide specimen clamp provides more convenience for the observer.
4. High precision focusing adjustment system and humanized configuration design provide operator more comfortable.

Specification		Model	
		156	156T
Viewing head	Compensation Free Binocular Head .Inclined at 30°	*	
	Compensation Free Trinocular Head Inclined at 30°		*
Interpupillary Distance	55mm -75mm	*	*
Eyepiece	WF10X	*	*
Objective	Achromatic objective: 4X, 10X, 40X(S), 100X(S)Oil	*	*
Stage	Double layers mechanical stage, Stage size: 140mm X 140mm, Moving range: 75mm X 50mm	*	*
Condenser	N.A1.25 Abbe condenser with iris diaphragm&filter	*	*
Focusing	Coaxial coarse & fine focusing adjustment with rack and pinion mechanism, Fine focusing scale Value 0.002mm	*	*
Collector	High brightness Kohler illumination	*	*
Light source	Halogen bulb 6V/20W.AC 85V-230V, Adjustable brightness	*	*

**XSZ-157 SERIES**



**XSZ-157H**



**XSZ-157T**

Specificaon		157A	157H	157T
Viewing Head	Monocular Inclined at 45°, 360° Rotatble	*		
	Compensation Free Binocular Head, Inclined at 30° (55mm-75mm)		*	
	Compensation Free Trinoculaar Head, Inclined at 30° (55mm-75mm)			*
Eyepiece	WF10X/18mm	*	*	*
Objective	Achromatic4X, 10X, 40X(S), 100X(S)Oil	*	*	*
Nosepiece	Backward Quadruple Nosepiece	*	*	*
Stage	Double layer mechanical stage, Stage SiXe:140mmX132mm Moving Range:70mmX30mm	*	*	*
Condenser	N.A.1.25 Abbe condenser with iris diaphragm and filter	*	*	*
Fcusing	Coaxial coarse & fine focusing adjustmen Fine focusing scale value 0.002mm	*	*	*
Light Source	Halogen bulb 6V20W or 6V15W, AC 220V/110V	*	*	*
	Adjustable light intensity			
Optional Accessory	Eyepiece: WF16X, WF20X, P16X Objective: 20X, 60X(s) Semi-plan Objective:4X, 10X, 20X, 40X(s), 60X(s), 100X(s)oil Plan Objective:4X, 10X, 20X, 40X(s), 60X(s), 100X(s)oil Reflective Mirror, Demonstration(Teaching) HeadDark field and Phase contrast device Photography atachment and CCD Adapter 0.5X, 0.57X, 0.75X LED illumination			

**XSZ-158 SERIES**



**XSZ-158**

XSZ-158 microscope becomes a new landmark. It is diversification brings you enter into an epoch not only the performance but also the application. The module design can meet your needs on all normal experiment and scientific research .Its humanized configuration design, reasonable control device and layout of every operation knob can keep your eyes, neck, shoulders, waist, arms and wrist against tiredness. You can be released from heavy word due to the comfortable operation.

<b>Specification</b>	
Viewing head	Compensation Free Binocular Head,Inclined adjustment 0 ° - 40 °
Interpupillary Distance	55mm -75mm
Eyepiece	WF10X/ 22mm
Nosepiece	Quintuple nosepiece
Objective	Infinity plan objectives:4X,10X,40X(S),100X(S) Oil
Stage	Double layers mechanical stage Stage size:180mmX 160mm, Moving range :75mmX 50mm
Condenser	Swing type N. A.1.25 Abbe condenser with iris diaphragm&filter
Focusing	Coaxial coarse&fine focusing adjustment with rack and pinion mechanism Fine focusing scale Value 0.002mm
Collector	Kohler illumination
Light source	Halogen bulb12V/30W 12V/50W or 12V/100W.AC85-230V, Adjustable brightness

**YJ-2001 SERIES**



YJ-2001M



YJ-2001B



YJ-2001T



YJ-2001DN

SPECIFICATION		MODEL			
		2001B	2001M	2001T	2001DN
Viewing head	Monocular head, Inclined at 30°, 360° Rotatable		*		
	Binocular head, Inclined at 30°, 360° Rotatable	*			
	Trinocular head, Inclined at 30°, 360° Rotatable			*	
	Articulated Free Binocular Head, Inclined at 30°, 360° Rotatable, Built-in Digital Camera System, Resolution:1280(H)X1024(V), 1/2Chip, USB2.0 with Micro-image Process Software				*
Eyepiece	WF10X, WF16X	*	*	*	*
Objective	Achromatic Objective 4X,10X,40X(S), 100X(S)Oil	*	*	*	*
Stage	Double Layers Mechanical stage140X155mm, Moving range: 50X70mm	*	*	*	*
Diaphragm	Φ2mm-Φ30mm iris diaphragm and filter	*	*	*	*
Condenser	Abbe NA 1.25 condenser	*	*	*	*
Focusing	Coaxial Coarse & Fine Focus Adjustment:30mm	*	*	*	*
Power	Built-in adjustable brightness halogen lamp 6V/20W, Kohler illumination	*	*	*	*

**YJ-2002 SERIES**



YJ-2002B



YJ-2002M



YJ-2002T



YJ-2002DN

SPECIFICATION		MODEL			
		2002B	2002M	2002T	2002DN
Viewing head	Monocular head, Inclined at 30°, 360° Rotatable		*		
	Binocular head, Inclined at 30°, 360° Rotatable	*			
	Trinocular head, Inclined at 30°, 360° Rotatable			*	
	Articulated Free Binocular Head, Inclined at 30°, 360° Rotatable, Built-in Digital Camera System, Resolution:1280(H)X1024(V), 1/2Chip, USB2.0 with Micro-image Process Software				*
Eyepiece	WF10X, WF16X	*	*	*	*
Objective	Achromatic Objective 4X,10X,40X(S), 100X(S)Oil	*	*	*	*
Stage	Double Layers Mechanical stage140X155mm, Moving range: 50X70mm	*	*	*	*
Diaphragm	Φ2mm-Φ30mm iris diaphragm and filter	*	*	*	*
Condenser	Abbe NA 1.25 condenser with Iris Diaphragm & Filter	*	*	*	*
Focusing	Coaxial Coarse & Fine Focus Adjustment:30mm	*	*	*	*
Power	Built-in adjustable brightness halogen lamp 6V/20W, Kohler illumination	*	*	*	*

**YJ-2005 SERIES**



**YJ-2005B**



**YJ-2005M**



**YJ-2005S**



**YJ-2005V**



**YJ-2005T**



**YJ-2005DN**

SPECIFICATION		2005B	2005M	2005S	2005V	2005T	2005DN
Viewing head	Monocular head, Inclined at 45°, 360° Rotatable		*				
	Binocular head, Inclined at 30°, 360° Rotatable	*					
	Dual observation head, Inclined at 45°, 360° Rotatable			*			
	Dual observation head, 30° Inclined and vertical, 360° Rotatable				*		
	Trinocular head, Inclined at 30°, 360° Rotatable					*	
	Articulated Free Binocular Head, Inclined at 30°, 360° Rotatable, Built-in Digital Camera System, Resolution:1280(H) X1024(V), 1/2 Chip, USB2.0 with Micro-image Process Software						
Eyepiece	WF10X	*	*	*	*	*	*
Objective	Achromatic Objective 4X,10X, 40X(S), 100X(S)Oil	*	*	*	*	*	*
Stage	Double Layers Mechanical stage125X125mm,moving range: 60*40mm	*	*	*	*	*	*
Diaphragm	Φ2mm- Φ30mm iris diaphragm and filter	*	*	*	*	*	*
Condenser	Abbe NA 1.25 condenser with Iris Diaphragm & Filter	*	*	*	*	*	*
Focusing	Coaxial Coarse & Fine Focus Adjustment:30mm	*	*	*	*	*	*
Illumination	Built-in adjustable brightness halogen lamp 6V/20W, or incandescent lamp, or fluorescent	*	*	*	*	*	*

**YJ-2008 SERIES**



YJ-2008M



YJ-2008B



YJ-2008T



YJ-2008DN

SPECIFICATION		MODEL			
		2008M	2008B	2008T	2008DN
Viewing head	Monocular head, Inclined at 30°, 360° Rotatable	*			
	Binocular head, Inclined at 30°, 360° Rotatable		*		
	Trinocular head, Inclined at 30°, 360° Rotatable			*	
	Articulated Free Binocular Head, Inclined at 30°, 360° Rotatable, Built-in Digital Camera System, Resolution:1280(H)X1024(V), 1/2Chip, USB2.0 with Micro-image Process Software				*
Eyepiece	WF10X, WF16X	*	*	*	*
Objective	Achromatic Objective 4X,10X,40X(S), 100X(S)Oil	*	*	*	*
Stage	Double Layers Mechanical stage140X155mm, Moving range: 50X70mm	*	*	*	*
Diaphragm	Φ2mm-Φ30mm iris diaphragm and Φ32 filter	*	*	*	*
Condenser	Abbe NA 1.25 condenser with Iris Diaphragm & Filter	*	*	*	*
Focusing	Coaxial Coarse & Fine Focus Adjustment: 30mm	*	*	*	*
Power	Built-in adjustable brightness halogen lamp 6V/20W, Kohler illumination	*	*	*	*

**BK200 SERIES**



Items	Specification	BK200	BK300	BK5000
Eyepiece	WF 10X-18 mm	*	*	*
	WF 10X-20mm	*	*	*
	WF16X-13mm	*	*	*
	WF 10X-18 mm (With Pointer)	*	*	*
	WF 10X-18 mm (Reticule 0.1mm)	*	*	*
Achromatic Objectives 4X, 10X, 40X (S), 100X (S) Oil		*		
Plan Objectives 4X, 10X, 40X (S), 100X (S) Oil			*	
Infinity Plan Objectives IOS 4X, 10X, 20X(S), 40X (S), 100X (S) Oil				*
Binocular Head, Inclined 30°, Rotatable 360°, Interpupillary Distance:50-75mm		*	*	
Seidentopf Binocular Head (For Infinity System) Inclined 30°, Rotatable 360°, Interpupillary Distance:50-75mm				*
Nosepiece	QuadpleX	*	*	*
	Quintuple	*	*	*
Mechanical Stage Size: 190mmX140mm, Travel: 78mmX55mm, Coaxial Coarse and Fine Focusing Knobs		*	*	*
Condenser	Abbe N.A.1.25 (Iris Diaphragm)	*	*	*
Koehler Illumination System	6V/20W Halogen Lamp(G4)	*	*	*
	6V/30W Halogen Lamp(G4)	*	*	*
Field Diaphragm		*	*	*
Filter	Blue	*	*	*
	Green	*	*	*
	Amber	*	*	*



**XSZ21-02 SERIES**



XSZ21-02B



XSZ21-02M



XSZ21-02S



XSZ21-02T



XSZ21-02V



XSZ21-02DN

SPECIFICATION		21-02B	21-02M	21-02S	21-02T	21-02V	21-02DN
Viewing head	Monocular head, Inclined at 45°, 360° Rotatable		*				
	Binocular head, Inclined at 30°, 360° Rotatable	*					
	Trinocular head, Inclined at 30°, 360° Rotatable				*		
	Dual observation head, Inclined at 45°, 360° Rotatable			*			
	Dual observation head, 30° Inclined and vertical, 360° Rotatable					*	
	Articulated Free Binocular Head, Inclined at 30°, 360° Rotatable, Built-in Digital Camera System, Resolution:1280(H) X 1024(V), 1/2 Chip, USB2.0 with Micro-image Process Software						*
Eyepiece	WF10X	*	*	*	*	*	*
Objective	Achromatic Objective 4X,10X,40X(S), 100X(S)Oil	*	*	*	*	*	*
Stage	Double Layers Mechanical stage130X140mm	*	*	*	*	*	*
Diaphragm	Φ2mm-Φ30mm iris diaphragm and filter	*	*	*	*	*	*
Condenser	Abbe NA 1.25 condenser with Iris Diaphragm & Filter	*	*	*	*	*	*
Focusing	Coaxial Coarse & Fine Focus Adjustment:20mm	*	*	*	*	*	*
Power	Built-in Adjustable Brightness Halogen lamp 6V/20W, Kohlar Illumination	*	*	*	*	*	*

**XSZ-701 SERIES**



XSZ-701BN



XSZ-701BN-T



XSZ-701AN



XSZ-701AN-T



XSZ-701AN-CCD



XSZ-701DN

SPECIFICATION		701AN 701BN	701AN-M 701BN-M	701AN-T 701BN-T	701DN
Viewing head	Monocular head, Inclined at 45°, 360° Rotatable		*		
	Sliding binocular head, Inclined at 45°, 360° Rotatable	*			
	Sliding Trinocular head, Inclined at 30°, 360° Rotatable			*	
	Articulated Free Binocular Head, Inclined at 30°, 360° Rotatable, Built-in Digital Camera System, Resolution: 1280(H)X1024(V), 1/2 Chip, USB2.0 with Micro-image Process Software				*
Eyepiece	WF10X, WF16X	*	*	*	*
Objective	Achromatic Objective 4X,10X,40X(S), 100X(S, Oil)	*	*	*	*
Stage	Double Layers Mechanical stage 140X155mm	*	*	*	*
Diaphragm	Φ2mm-Φ30mm iris diaphragm and filter	*	*	*	*
Condenser	Abbe NA 1.25 condenser with Iris Diaphragm & Filter	*	*	*	*
Focusing	Coaxial Coarse & Fine Focus Adjustment: 25mm	*	*	*	*
Power	Built-in Adjustable Brightness Halogen lamp 6V/20W	*	*	*	*

**XSZ-127 SERIES**



XSZ-127



XSZ-127B



XSZ-127BT



XSZ-127DA



XSZ-127E



XSZ-127D



XSZ-127DE

Specificaon		127	127B	127BT	127DA	127E	127D	127DE
Viewing Head	Monocular Inclined at 45°, 360° Rotatble	*						
	Compensation Free Binocular Head, Inclined at 30°		*					
	Compensation Free Trinoculaar Head, Inclined at 30°			*				
	Sliding Binocular Head Inclined at 45°				*		*	
	Sliding Trinocular Head Inclined at 45°					*		*
Eyepiece	WF10X/18mm	*	*	*	*	*	*	*
Objective	Achromatic 4X,10X,40X(S), 100X(S, Oil)	*	*	*	*	*	*	*
Stage	Double layer mechanical stage, size: 140mmX140mm Moving Range:75mmX50mm	*	*	*	*	*	*	*
Condenser	N.A.1.25Abbe condenser with iris diaphragm and filter	*	*	*	*	*	*	*
Focusing	Coaxial coarse & fine focusing adjustmen Fine focusing scale value 0.002mm	*	*	*	*	*	*	*
Light Source	Halogen bulb 6V20W or 6V15W, AC 220V/110V Adjustable light intensity	*	*	*	*	*	*	*
Base	Black decorating panel	*	*	*			*	*

**BS SERIES**



- Design for Ergonomic
- Low-position operation
- Wide available voltage range:85-265V
- Superb optical image
- Newest and integrative structure for better stability

**OPTIONAL ACCESSORIES:**

- Eyepieces: WF16X WF10X(pointer) WF10X(reticle)
- Objectives: IOS Achromatic 4X,10X,40X(S),100X(S, Oil)
- Mirror
- Electronic Eyepiece

ITEM	SPECIFICATION	BS100	BS101	BS201	BS202	BS203
Eyepieces	WF10X-18	*	*	*	*	*
Objectives	Achromatic 4X,10X,40X(S),100X(S, Oil)	*	*	*		
	Splan 4X,10X,40X(S),100X(S, Oil)				*	*
Eyepiece head	Monocular head 45° inclined, 360° Rotatable	*	*			
	Binocular head 45° inclined, slide			*	*	
	Binocular head 30° inclined, compensation free					*
Main body	Quadruple nosepiece, Coaxial coarse and fine focusing	*	*	*	*	*
Condenser	N.A.1.25 Oil	*	*	*	*	*
Illumination	Natural light	*				
	Halogen lamp 6V 20W		*	*	*	
	Halogen lamp 6V 20W, AuXiliary lens built-in body					*
Mirror	FiXed	*				
Fuse	Φ5X20/2A		*	*	*	*
Filter	Φ32 (blue)	*	*	*	*	*

**BK1000 SERIES**



**OPTIONAL ACCESSORIES:**

Eyepieces: WF16X, WF10X(reticle)

Photo eyepieces: 2.5 X eyepiece

Plan objectives: 4X,10X,40X(S),100X(S, Oil)

Phase contrast condenser for plan objectives

35mm photo attachment

Filter: Φ32 (Green), Φ32 (Amber)

Dark field attachment: Dark field condenser

ITEM	SPECIFICATION	1200	1201	1300	1301
Eyepieces	Plan eyepiece (10X-18)	*	*	*	*
Objectives	Achromatic 4X,10X,40X(S),100X(S, Oil)	*	*		
	Splan 4X,10X,40X(S),100X(S, Oil)			*	*
Eyepiece head	Sliding binocular head 45° inclined	*			
	Sliding trinocular head 45° inclined			*	
	Compensation free binocular head 30° inclined		*		
	Compensation free trinocular head 30° inclined				*
Main body	Four- hole nosepiece (build-in)	*	*	*	*
Condenser	N.A.1.25 Oil	*	*	*	*
Base	AC 220V or 110V	*	*	*	*
Filter	Φ32 (blue)	*	*	*	*

**BK2000/3000 SERIES**



BK2000



BK3000

**OPTIONAL ACCESSORIES:**

Eyepieces: WF16X WF10X (pointer) WF10X(reticle)

Photo eyepieces: 2.5 X photo negative eyepiece

Phase contrast attachment:

35mm photo attachment

C-Mount and CCD camera

Filter: Φ32 (Green), Φ32 (Amber)

Simple polarizer attachment: Polarizer slide / Analyzer slide

Dark field attachment: Dark field condenser

ITEM	SPECIFICATION	2100	2200	2201	2300	2301	3200	3300
Eyepieces	Plan eyepiece (10X-18)	*	*	*	*	*	*	*
	Photo negative eyepiece S4				*	*	*	*
Objectives	Achromatic 4X,10X,40X(S),100X(S, Oil)	*						
	Splan 4X,10X,40X(S),100X(S, Oil)		*	*	*	*		
	IOS Achromatic 4X,10X,40X(S),100X(S, Oil)						*	*
Eyepiece head	Monocular head 45° inclined, 360° Rotatable	*						
	Binocular head 45° inclined, slide		*					
	Trinocular head 45° inclined, slide				*			
	Binocular head 30° inclined, compensation free			*			*	
	Trinocular head 30° inclined, compensation free					*		*
Main body	Five-hole nosepiece (build-in)		*	*	*	*	*	*
	Four-hole nosepiece (build-in)	*						
Condenser	N.A.1.25 Oil	*	*	*	*	*	*	*
Base	AC 220V or 110V	*	*	*	*	*	*	*
Photo attachment	Photo tube				*	*		*
	35mm DF camera				*	*		*
Immersion oil		*	*	*	*	*	*	*
Filter	Φ32 (blue)	*	*	*	*	*	*	*

**H6000i / H6000 SERIES**



H6000i



H6000

**OPTIONAL ACCESSORIES:**

Eyepieces: WF10X(pointer) WF16X

IOS infinity-corrected plan achromatic objective: PL4X/0.10

IOS infinity-corrected phase contrast attachment

35mm photo attachment: 10X Reticule eyepiece, S2.5X S4X S6.3X photo eyepieces

C-Mount and CCD camera

Side viewing attachment: Two view field space 600mm

Polarizer attachment: Polarizer slide / Analyzer slide

Dark field attachment: Dark field condenser

ITEM	SPECIFICATION	6201i	6203i	6301i	6303i	6202	6203	6302	6303
Eyepieces	Plan eyepiece (10X-18)	*	*	*	*	*	*	*	*
Objectives	Plan10X, 25X, 40X(S),100X(S, Oil)						*		*
	Splan 10X, 25X, 40X(S),100X(S, Oil)					*		*	
	IOS Plan 10X, 20X, 40X(S), 100X(S, Oil)		*		*				
	IOS Achromatic 4X, 10X, 40X(S), 100X(S, Oil)	*		*					
Eyepiece head	Binocular head 30° inclined, compensation free	*	*			*	*		
	Trinocular head 30° inclined, compensation free			*	*			*	*
Main body	Four- hole nosepiece (build-in)	*	*	*	*	*	*	*	*
Stage	Moving range:76X50, size: 160X135	*	*	*	*	*	*	*	*
Condenser	N.A.1.25 Oil	*	*	*	*	*	*	*	*
Base	AC 220V or 110V, 6V/20W halogen lamp	*	*	*	*	*	*	*	*
Immersion oil		*	*	*	*	*	*	*	*
Filter	Φ32 (blue)	*	*	*	*	*	*	*	*

ACCESSORIES



OBJECTIVE



EYEPIECE

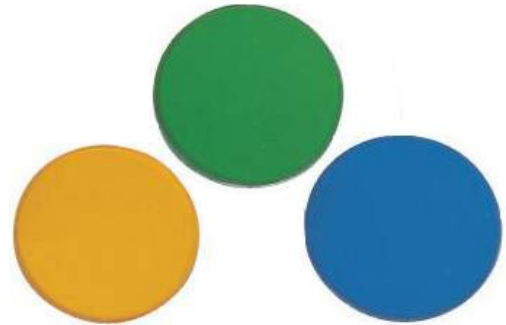


VIEWING HEAD





**MOVING SCALE**



**FILTER**



**STAGE**



**DRY/OIL DARK FIELD CONDENSER**

**PHOTO/CCD ADAPTER**



**PHASE CONTRAST KIT**



**SIMPLE POLARIZATION SET**



**INCANDESCENT / HALOGEN / LED LAMP  
FLUORESCENT LAMP FUSE BULB**

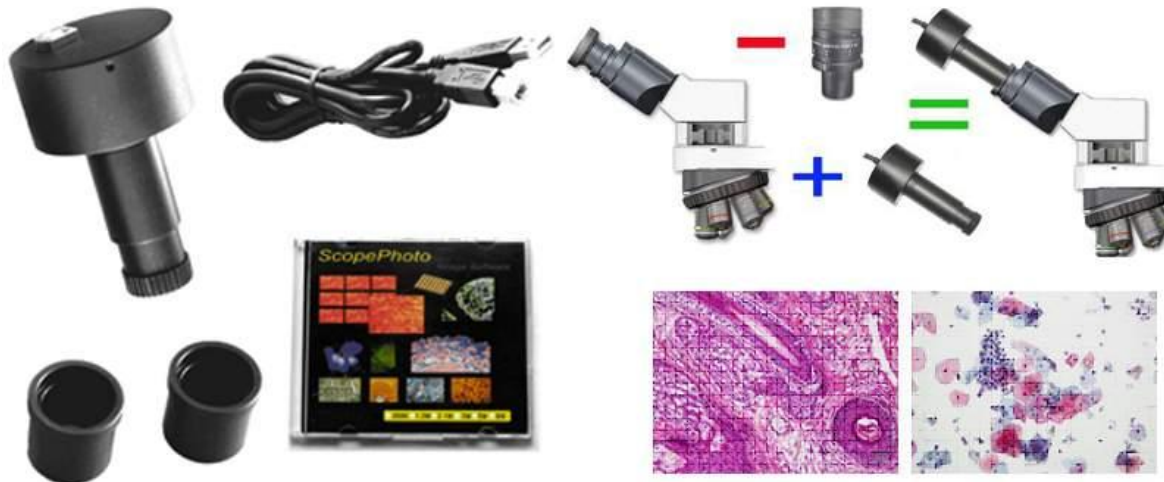


**EXTERNAL LIGHT SOURCE CHARGER**



**LOW COST ELECTRONICE EYEPIECE  
DEM SERIES (0.3MP, 1.3MP, 2.0MP)**

Model	Part Number	Resolution
DEM35	#5820	640x480
DEM130	#5821	1280x1024
DEM200	#5822	1600x1200



**EYEPIECE VIDEO CAMERA**  
**DCM SERIES (0.3MP, 1.3MP, 2.0MP, 3.0MP, 5.0MP, 8.0MP, 9.0MP)**

Model	Part Number	Resolution
DCM35	#5830	640x480
DCM130	#5860	1280x1024
DCM130E	#5866	1280x1024
DCM310	#5888	2048x1536
DCM500	#5898	2592x1944
DCM800	#5900	3488x2616
DCM900	#5908	3264x2448